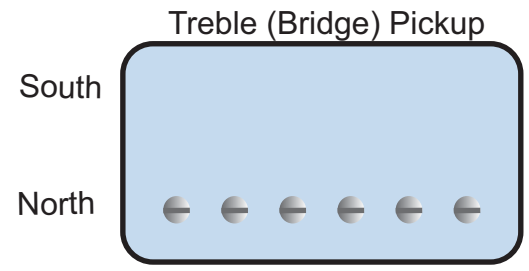
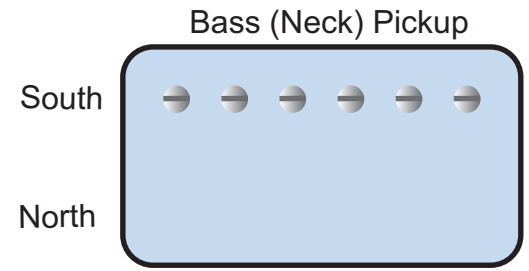
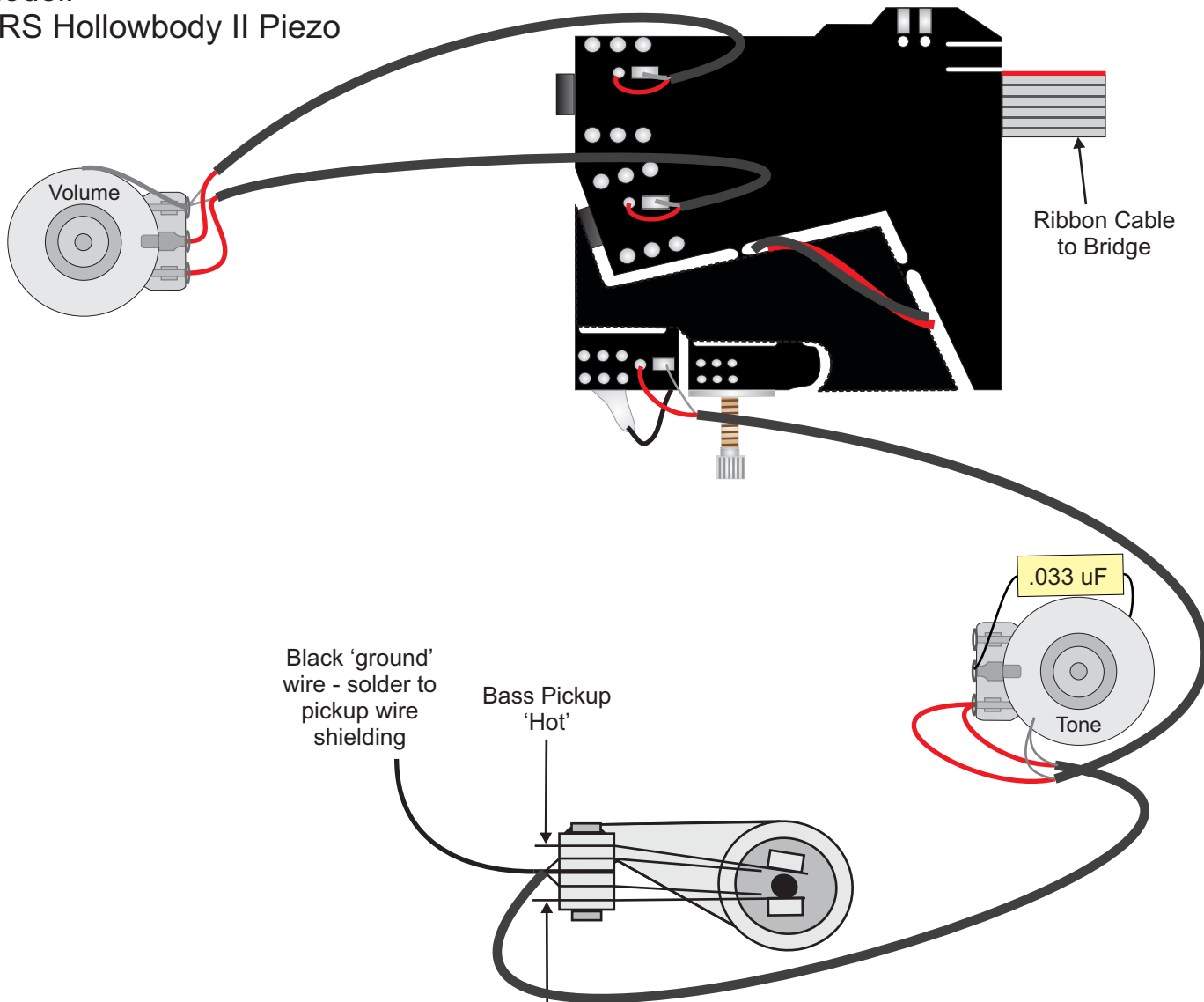


Model:
PRS Hollowbody II Piezo

Note Pickup shape is just for reference.
All pickups using this diagram
shall be oriented in this manner.



Black 'ground' wire - solder to pickup wire shielding

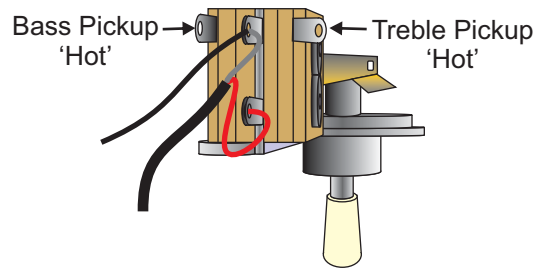
Bass Pickup 'Hot'

Treble Pickup 'Hot'

.033 uF

Tone

3-way Pickup Selector Switch



Operating Instructions
3-way toggle pickup switch:
Position 1 (down) - Treble Pickup
Position 2 - Treble and Bass Pickups
Position 3 (up) - Bass Pickup
Mini Toggle Switch:
Down : Magnetic Pickup Mode
Middle : Magnetic Pickup and Piezo Modes
Up : Piezo Mode